



# webber

## MARCH 2017

- SCC OPENS SAND MINE IN LIBERTY COUNTY
- EMPLOYEE NEWS AND ANNIVERSARIES
- DEAL OF THE MONTH: AT&T DISCOUNT
- CYBER SECURITY: BEWARE OF MALWARE

IN MARCH, WEBBER CELEBRATED WOMEN IN CONSTRUCTION WEEK.

Rachael Ashton and Savanna Magee are two of the talented ladies working on Webber's US 290, Segment 5 project.



# SCC OPENS SAND MINING OPERATION IN LIBERTY COUNTY

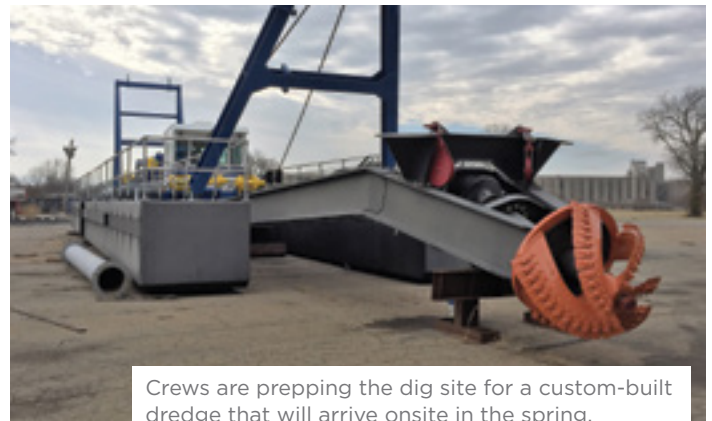
Southern Crushed Concrete (SCC) plans to open a new sand mine in Liberty County, just east of the Trinity River. The operation will include dredging and manufacturing of concrete sand materials onsite, with the goal of selling half a million tons per year.

James Walker will serve as the Manager of Sand Mining Operations over both SCC sites with approximately six to eight employees working onsite.

“This is a big investment in the sand mining business and will allow SCC to be in the sand manufacturing business in the foreseeable future,” said Jim Miller, Managing Director of Webber’s Materials Division. “Borings on the property showed sand depths of 45-70 feet across the

130-acre lot with the possibility of mining an additional 500 acres in the future.”

The sand mine is expected to produce TxDOT grade concrete sand and fine sand for more than 10 years.



Crews are prepping the dig site for a custom-built dredge that will arrive onsite in the spring.

Overseen by James Walker, the sand plant operations are being built to help sift, clean and prep 2,000 tons of material per day.





In February, Webber's Heavy Civil Division President Curtis Van Cleve welcomed the first group of employees to skills training.

# HEAVY CIVIL SKILLS TRAINING STARTS FOR TEAMMATES IN SOUTH TEXAS

In 2016, Webber was awarded a grant by the Texas Workforce Commission to help facilitate a skills development program for its craft employees. With Lone Star College as a partner, Webber has committed to training over 340 employees annually in areas of construction, mathematics and other valuable competencies of its industry.

“We want to promote our employees from within,” said President of Webber’s Heavy Civil Division, Curtis Van Cleve, at the first session in South Texas in January. “And we are here to help them get the skills they need to grow their careers at Webber.”

Webber’s equipment operators, foremen, superintendents and surveyors are eligible to attend a series of customized training classes focused on enhancing skills related to heavy civil construction procedures and works. Mathematics, welding, blueprint reading and GPS systems, along with an extensive program for equipment qualification are some of the courses offered in the program.

Initial testing and placement took place in November 2016 and classes have since started for the South Texas region. The North Texas region training is scheduled to begin in mid-2017.



*...we are here to help them get the skills they need to grow their careers at Webber.*



**CURTIS VAN CLEVE**  
President,  
Heavy Civil Division

“This program is one example of the many ways that Webber is working to become the employer of choice within our industry,” said Mitch Beckman, Webber Vice President of Human Resources. “It embodies the Ferrovia values of Excellence for our clients, Innovation within our projects and Respect for our field employees.”

# 2017 IS OFF TO A STRONG START WITH BACKLOG & BIDDING

Since January 2017, Webber has been awarded six projects across its three construction divisions, totaling nearly \$500 million worth of work.



## HEAVY CIVIL DIVISION

The Heavy Civil Division was awarded two key projects from TxDOT, which included Interstate 45 (I-45) in Walker County and U.S. Route 281 in Bexar County

totaling more than \$300 million in project work.

The U.S. 281 contract includes the construction of three new lanes (two for general use and one for high occupancy vehicles) in each direction between Loop 1604 and Borgfeld Drive, and four interchanges with Loop 1604 and a direct connection to a park-and-ride facility with access to VIA Metropolitan Transit (San Antonio's public transport system). The necessary frontage roads will be built along with bicycle and pedestrian facilities. The eight-mile project is expected to take three years.

The I-45 contract also includes widening a 6.7-mile stretch of the highway in Walker County, north of Houston, to six travel lanes, as well as replacing bridges, frontage roads and drainage structures. The project will alleviate congestion on the highway and enhance freight mobility in the area. Built in the early 1960s, I-45 is one of the main evacuation routes for the Houston and Galveston areas with over 48,000 vehicles using the highway each day.

In addition, Webber submitted its proposal for SH 249 on March 20 and we are one of two bidders for the project.



## COMMERCIAL DIVISION

The Webber Commercial Division continues to be a partner of choice for school districts across the greater

Houston area. As such, the company was selected to build two middle schools for Aldine ISD to include the Aldine ISD West Mount Houston Middle School (\$46 million) and Lauder Middle School (\$47 million) sites.



*We are seeing tremendous opportunities in Texas for all of our business lines right now. We have had a great start to 2017 in all four of our divisions.*



**TIM CRESON**  
President and CEO

Each Aldine ISD school is a 227,000-square foot, two-story steel structure with a masonry brick façade middle school, with a cafetorium, full gym, science labs and playing fields on 45 acres. These schools include workspaces for 6th through 8th grade levels and collaborative learning areas, bigger hallways, large outdoor learning spaces, large group and small group learning spaces, art and music programs, and a theater program area. The project also consists of site work parking, roads and detention areas across the large 45-acre campus.

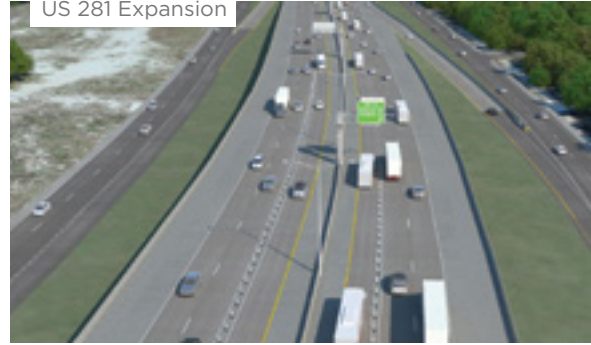
Both projects will start in early 2017 with completion scheduled for August 2018. These two schools are



RENDERINGS of the two new Aldine ISD Middle Schools and the new Houston ISD Austin High School



BEFORE/AFTER US 281 Expansion



a part of the 2015 Aldine ISD \$798 million bond referendum for the construction of new schools, renovations, enhancements and other projects to meet the growth needs of the school district over the next five years.

In addition, dirt work has already started for both schools with completion scheduled for August 2018. More from the Houston Business Journal can be found here: [bit.ly/2o8csBR](http://bit.ly/2o8csBR).



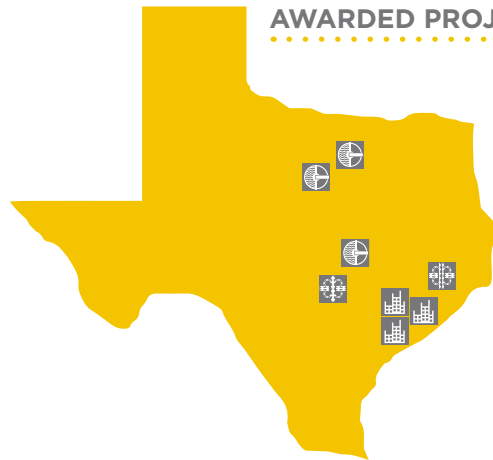
**WATERWORKS DIVISION**

In January, Webber was awarded the Walnut Creek Wastewater Treatment Plant Tertiary Filter Rehabilitation project in Austin, Texas. Mobilization to the site will begin in mid-April 2017 with an estimated completion date of early 2020. The project is worth \$25 million. Ben Richards will serve as Project Manager and Glenn Lanmon will be the Superintendent. This is Waterworks' 7th City of Austin project since 2004.

The Waterworks Division is also an apparent low bidder in its 5th win with the North Texas Municipal Water District. Located in Plano, the Rowlett Creek Regional WWTP and Lower Cottonwood Creek Lift Station project is worth \$49.5M.

Most recently, the Gulf Coast Water Authority selected Webber for its \$12.7M Industrial Pump Station project despite being the second low bidder on a Competitive Sealed Proposal (CSP). The Waterworks division won due to the trust developed over many years between the owner and Waterworks' Chris Smith and David Brown.

**AWARDED PROJECTS**



- Roadway Expansion on U.S. 281 Between Loop 1604 and Borgfeld Drive, in Bexar County, North of San Antonio
- Roadway Expansion on I-45 in Walker County, North of Houston
- Construction of Two Middle Schools for Aldine ISD in Houston
- Demo and Construction of New Austin High School Facilities for Houston ISD
- Walnut Creek Wastewater Treatment Plant Tertiary Filter Rehabilitation in Austin
- Water Distribution System Improvement for the City of Granbury
- Rowlett Creek Peak Flow and Life Project in Plano

# 2017 WEBBER VALUES AWARD NOMINATIONS NOW OPEN

This year, Webber's goal is to share and reward key behaviors that reflect the five values of the company- Innovation, Excellence, Collaboration, Safety and Integrity. The focus of this program is to reward specific actions, results or solutions that benefitted Webber while demonstrating exemplary application of these key values. The awards will honor the behaviors of individuals, teams and cross-company teamwork.

Submission is easy with only six questions to fill out via Survey Monkey. The two key questions for submitting to the award include:

- **What task, project or solution did the nominee apply Webber's core values to and what was the outcome/results?** (Please include the situation, action, result and benefit to the action as detailed as possible.)

- **What makes this behavior an exemplary model for following Webber's values?** (Tie this back to the result and benefit of the action taken by the award nominee.)

Submission examples are included within the Survey Monkey instructions page. You can submit multiple awards and multiple employees can be named as a team of contributors that led to a certain behavior. Each member will receive recognition for their contribution(s) at the awards ceremony on April 21 at The Woodlands Resort during the Webber Annual Meeting.

To submit a nomination or read more about the submission requirements, please visit <https://www.surveymonkey.com/r/95YGQCS>. Award submissions are due by **April 6th**.



Cliff Warren leads lift director training in Amarillo

## DEAL OF THE MONTH Discount Service with AT&T



As a Webber employee, you could be saving **18% OFF** qualified wireless services and **25% OFF** eligible wireless accessories.

To purchase online, visit [att.com/wireless/webber](http://att.com/wireless/webber)

If you visit a local AT&T store, please have proof of eligibility (employee badge, paystub or student ID).

Mention FAN: 4096094

# HELP WANTED:

## SUMMER INTERNS, RECENT GRADS AND PROJECT LEADS NEEDED

Webber is actively evaluating students to participate in its “12 Weeks to Greatness” summer 2017 internship program, in addition to graduating students for Field Engineer openings. This spring, Webber employees attended career fairs at the University of North Texas, University of Texas at Austin, Texas A&M, Texas Tech, Virginia Tech, Oklahoma State University, Oklahoma University and University of Arkansas.

The quality of the students Webber has met is top notch and we have the goal of selecting two interns from each school visited. The career fairs have proven to be a great way to educate students about Webber and have provided an excellent candidate pool for project teams.

### WEBBER IS CURRENTLY HIRING FOR ITS PROJECT TEAMS ACROSS TEXAS. SOME IMMEDIATE OPENINGS INCLUDE:

- PROJECT ENGINEER  
PLW, Rowlett (North Texas Region)
- PROJECT ADMINISTRATOR  
PLW, Austin (Central Texas Region)
- PROJECT SUPERINTENDENT  
San Antonio (South Texas Region)
- PROJECT SUPERINTENDENT  
Rosedale (Central Texas Region)
- PROJECT ENGINEER  
San Antonio (South Texas Region)

For more information on these opportunities and others, please reach out to Human Resources.

.....  
A **NEW EMPLOYEE REFERRAL PROGRAM** WILL BE ROLLED OUT IN APRIL. STAY TUNED FOR MORE INFORMATION. IT PAYS TO WORK AT WEBBER!  
.....

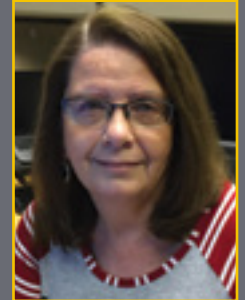
# ANNIVERSARIES

Thank you to our Teammates for their many great years of service.

## 20 YEARS



Amaya  
Corredor  
Palomino



Cynthia  
Parker

## 15 YEARS

Rafael G. Herrera  
Mario A. Valadez  
Wilmer A. Zamora

## 10 YEARS

Alberto Barron Cruz  
Geronimo Gabriel  
Angel H. Granados  
Baldomero G. Hernandez  
Emmanuel Lopez  
Martin A. Morales  
Napoleon Ortez  
Miguel R. Resendiz

## 5 YEARS

Jose L. Andrade  
Edwin Arroyo Rivera  
Alisha D. Barrera  
Madelyn Y. Crossland  
Raul Dominguez  
Katy B. Drown  
Humberto Garcia  
Telesforo M. Legorreta  
Felipe Oliva  
Filibero Rangel Conde  
Luis A. Rodriguez  
Jose S. Saldana  
Ramon Solis Perez  
Roger D. Stanfield  
Abel Vallin



# MALWARE CAN BREAK YOU

Ferrovia's cyberwatch monitoring systems have detected a new malware campaign mail with CryptoLocker (i.e. phishing malware). This malware ciphers documents and folders, and presents itself as an e-mail referring to an invoice with a link to Dropbox and/or an attachment.

If you have received an email like this, please do either of the following:

- 1. IF YOU HAVE NOT CLICKED ON THE LINK,** do not resend and you must proceed to delete it immediately.
- 2. IF YOU CLICKED ON THE LINK:** please contact the information security department through [seguridad.ti@ferrovial.com](mailto:seguridad.ti@ferrovial.com). The security team will contact you only if it is necessary to further resolve the incident.

The email sender could be anyone and it contains just a pair of sentences and a link or an attachment. The link forwards to an invoice located in a Dropbox webpage to be downloaded.

## HOW TO DETECT A PHISHING SCAM?

These particular emails contain:

- Grammar and spelling mistakes or incorrect formats.
- Urgently request relevant information (personal data, passwords, bank accounts, credit card numbers, etc.). Neither your bank nor any other type of institution will request confidential information by email.
- Ask you to carry out a relevant transaction in a hurry (bank transfers, confirmation of confidential information, etc.).

- Include links to a web page in order to enter information (codes, passwords, personal data, etc.) or to download a file, which will infect your computer when opened, allowing the fraudster to take control of it.

## HOW TO PROTECT YOURSELF FROM A PHISHING ATTACK?

- Do not try to access commercial or banking websites from any link that comes in an email. Instead, search for the establishment by writing the URL directly in to the web browser.
- Keep antivirus software up-to-date on your personal devices.
- When in doubt, systematically reject any suspicious communications.
- If you identify an email as phishing, delete it immediately. If you have doubts, contact another channel with the sending person or entity and verify the authenticity of the email.

If you have any questions, please contact the IT department at 786.845.2929 or [smc.ferrovial.us@telefonica.com](mailto:smc.ferrovial.us@telefonica.com).



webber



[www.webber.com](http://www.webber.com)



[/WebberConstruction](https://www.facebook.com/WebberConstruction)



[/company/webber](https://www.linkedin.com/company/webber)