

# webber

MAY | JUNE 2018



Webber Safety Director, Sean Seelbach, conducts safety training at the US 290 jobsite.

A Message from CEO, Tim Creson on Safety

Win a Big Screen TV - see page 3

Webber Store is NOW OPEN!

Focus On: Environment

Meet the 2018 Interns

## OPENING WORDS

# SAFETY STAND DOWN MESSAGE FROM THE PRESIDENT & CEO, TIM CRESO:

I'm excited to see all the plans and activities scheduled in June as Webber, led by our outstanding safety department, observes National Safety Month again this year. In 2017, we observed our first, company-wide National Safety Month Stand Down to pause and reflect on Webber's safety culture and how each individual plays a key role to keep the entire Webber family safe.

At Webber, we always start with safety, but we need to make sure that safety is more than just a moment at the start of our day. Summer is upon us, and as our schedules become busier, the pressure to perform and meet deadlines increases.

**While "getting the job done" is very important, employee safety is our number one priority on ALL projects.** There is always time for safety: to work safely, to take the necessary precautions, to do things the right way, always making sure your fellow team members are also working safely.

Putting on your PPE is also about awareness. When you put on your gear, it is a reminder that we do dangerous work and must stay focused. I cannot emphasize this enough: Safety is everyone's responsibility. Do NOT walk by an unsafe situation or activity without speaking up. If you "see something, say something."

Do not think twice about reminding your co-workers, including your foreman, superintendent and project manager, to practice the correct safety procedures on each and every task. Even the seemingly small things, like reminding everyone to wear their gloves and safety glasses, could save a pair of hands or eyes or even someone's life.

The Webber family is a safe family. It is our job to protect and care for our family and to keep them safe every day. Let's take care of each other – like family – out here on the projects, so each of us can go home to our own families. We need to carry safety with us all the time, every day, hour and moment. Remember, shortcuts are never worth getting someone hurt or killed.

**Be safe. Help your team be safe. And don't be afraid to speak up when something isn't being done safely.** I ask that everyone participates in the National Safety Month activities and the company-wide safety stand down. We are in this together, and it takes all of us to ensure each and every one of us goes home to our families each night.

Best Regards,



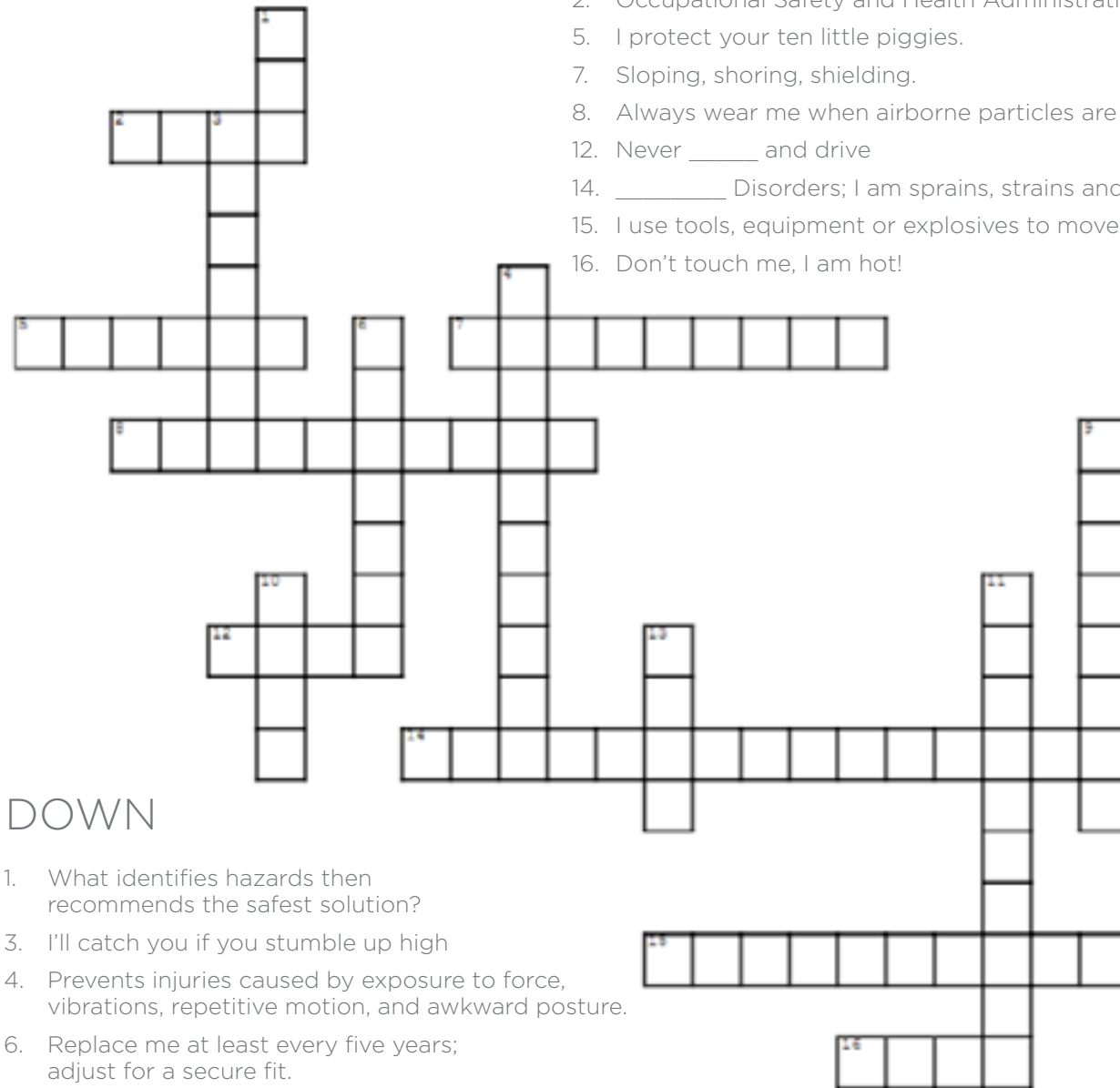
Tim Creson  
President & CEO



## WEBBER SAFETY HAZARD HUNT 2018

### ACROSS

2. Occupational Safety and Health Administration
5. I protect your ten little piggies.
7. Sloping, shoring, shielding.
8. Always wear me when airborne particles are present.
12. Never \_\_\_\_\_ and drive
14. \_\_\_\_\_ Disorders; I am sprains, strains and long-term pain.
15. I use tools, equipment or explosives to move the earth
16. Don't touch me, I am hot!



### DOWN

1. What identifies hazards then recommends the safest solution?
3. I'll catch you if you stumble up high
4. Prevents injuries caused by exposure to force, vibrations, repetitive motion, and awkward posture.
6. Replace me at least every five years; adjust for a secure fit.
9. Temporary or moving elevated platform for workers.
10. Yellow or orange with reflective tape to ensure I'm easily seen at work.
11. Personal \_\_\_\_\_ Equipment; My job is to protect you.
13. Erect a guardrail as a means of preventative action.

Please return completed cross word puzzles to [myWebber@webber.com](mailto:myWebber@webber.com) by EOD July 6. Entries with 100% correct answers will be entered into a drawing for a Big Screen TV. The winner will be announced on July 11.

## SAFETY FIRST

# FOOTWEAR PROTECTION

Your feet are a critical part of your body that you use every day and in some cases, enable you to do your job effectively. Foot protection means guarding your toes, ankles and feet from injury. Protective footwear in the workplace is designed to protect the feet from physical hazards such as falling objects, stepping on sharp objects, extreme temperatures, wet and slippery surfaces or exposure to corrosive chemicals.



## WHEN BUYING WORK BOOTS, KEEP THE FOLLOWING IN MIND

- Don't expect footwear that is too tight to stretch with wear.
- Have both feet measured as they often differ in size. As a rule of thumb, buy the boot that fits the bigger foot.
- Buy boots late in the afternoon when feet are likely to be swollen to their maximum size.
- Consider purchasing shock-absorbing insoles when the job requires walking or standing on hard surfaces for extended periods of time.
- Steel Toes are required. Metatarsal protection is optional.

## INDICATORS OF GOOD & PROTECTIVE FOOTWEAR

- The inner side of the shoe must be straight from the heel to the end of the big toe.
- The shoe must grip the heel firmly.
- The forepart must allow freedom of movement for the toes.
- The shoe should have a fastening across the instep to prevent the foot from slipping while walking.
- The boot should have a low, wide-based heel; flat boots are recommended.

## EVERY YEAR, NEARLY 200,000 WORKERS INJURE THEIR FEET.

There are two types of work-related foot injuries. The first type includes foot injuries from punctures, crushing, sprains and lacerations. They account for 10% of all reported injuries. The second type includes those resulting from slips, trips and falls. They account for 15% of all reported disabling injuries. Although slips and falls don't always result in foot injuries, lack of foot safety plays an important role in their occurrences.





## SAFETY FIRST

# PROTECT YOUR HEAD

A construction worker removes his hard hat because he is too warm. An engineer refuses to wear head protection, as she has “never been hurt before.”

A utility worker thinks hard hats make him look silly and removes his every chance he gets.

All of these situations are dangerous. Head injuries can result in traumatic brain injuries and death. In 2012, more than 65,000 cases involving days away from work occurred due to head injuries in the workplace, according to the 2015 edition of the National Safety Council chartbook “Injury Facts.” That same year, 1,020 workers died from head injuries sustained on the job.

**Hard hats are required every time you are on a project site** – regardless of task or job function. Hard hats are vital for protecting personnel from potential injuries to the head from falling objects. In addition, hard hats designed to reduce electrical shock are required when working near exposed electrical conductors that may contact the head. All hard hats also should have a label inside the shell listing the manufacturer, ANSI designation and class of the hat. Specialty types of hard hats include those with miner’s light attachments, reflective stripe for night work, face shields for welders and attachments for visors or earmuffs.

## HOW TO INSPECT A HARDHAT

OSHA recommends inspecting hard hats before and after each use, but if a worker is involved in an impact accident, the hat should be replaced immediately because the suspension will have been stretched. If hats are worn every day, they should be replaced every two years, with suspensions replaced every 12 months.

Extreme hot and cold environments can shorten a hard hat’s life. For example, avoid storing hats where they could be exposed to the sun’s rays, such as the back window of a car. UV rays can also cause significant damage to hard hats.

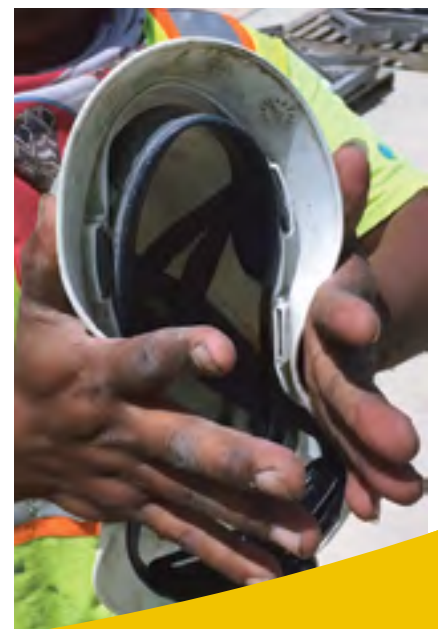
Hard hat stickers are popular. While they allow individual expression, they can be a safety risk. If stickers are used, they must not cover up any damage or cracks. Also, they should be placed at least a half an inch above the brim to avoid any possibility of creating an electrical arc due to the metal content in some stickers. Absolutely no holes in hard hats should be drilled for applying name tags. This will sacrifice the integrity of the helmet.

## HARD HATS THAT BEND MUST BE REPLACED IMMEDIATELY.



**You should perform daily checks on your hard hat and discontinue use if any of these conditions occur:**

- Dents, cracks, tears, gouges or holes in the shell.
- Frayed or cut suspension straps.
- Cracks or tears in the suspension system (which keeps the shell from touching the wearer’s head) or loss of pliability.
- Brittleness or dullness of the shell (it may look chalky) resulting from excessive exposure to sun, chemicals or temperature extremes.
- Try to compress the shell from the sides using both hands to check for elasticity. The shell should bounce back and be as elastic as a new one.



# PROJECT CHECK-INS



## webber heavy civil

### 249 | TOMBALL, TX

- Both frontage road bridges have been completed over Spring Creek, as well as all drill shafts for the Brown overpass bridge.
- Southbound frontage road is scheduled to open to traffic two months ahead of schedule, which will allow the main lane work to start earlier.
- Completed all work on the Lone Star College driveway on time and on budget.
- Wetland mitigation work, as required by the client, was finished in a timely manner due to weather. There was no impact on student operations or the environment.
- Main lane walls are scheduled to start in October 2018 with the subsequent improvements on schedule and resource leveling.

## plw waterworks

### P2B PROJECT | HOUSTON, TX

- PLW recently completed its major milestone at the EWPP Clearwell & Valve Replacement project. The biggest challenge was the large amount of work to complete within the three-month shutdown period. The team faced many unforeseen challenges, but was able to turn over the Clearwell to the city by the deadline so Plant 2 could be put back into operation.
- Overall work included:
  - Placing concrete ballast slab in the Filter Gallery
  - Installing GFRP to reinforce the existing concrete in the Clearwell and Approach Channel
  - Construction of a new overflow structure
  - Installment of box culverts beneath the road to the new detention pond
- In the upcoming months, PLW will be completing the remainder of the work including the Sodium Bisulfite Building, pumps, new generator and detention pond.
- The project is projected to finish this summer.







## webber commercial

### AUSTIN HIGH SCHOOL, HOUSTON ISD | HOUSTON, TX

- Demolition has begun on the water tank, chiller yard, workshops and buildings.
- The abatement in the primary building structure built in 1936 is now underway. This historical section of the building will remain and be incorporated into the new high school design.
- Abatement of the existing structure is proceeding well and demolition of the existing high school is scheduled to begin immediately following utility disconnects. New underground and foundation work for the new structures is scheduled to begin in early June following demolition (See page 13 for more on abatement)..

## webber commercial

### WELLBORN MIDDLE SCHOOL, COLLEGE STATION ISD | COLLEGE STATION, TX

- Exterior fencing, the athletic facilities and site paving is 90% complete.
- Exterior and interior glazing is 90% complete and will finish in the next two weeks.
- The exterior masonry of the school is complete, with the exception of the column wraps which is on-going. Interior finishes, including paint, vinyl wall covering, ceilings, are ongoing.
- The school will be completed this summer and the building will be ready for the 2018-2019 school year.



## TEAM SPOTLIGHT

# IH 45 TEAM GOES BEYOND THE CALL OF DUTY

Webber employee's once again put the traveling public's safety first – exhibiting a commitment to excellence and safety in all that we do.

Area Manager Fernando Pizarro and his New Waverly IH 45 team recently demonstrated persistent dedication to providing safe roadways, even when it inconveniences the team personally.

A few months ago, the IH 45 team discovered existing structure conditions that could create a safety issue to the traveling public. The team took prompt action in coordination with TxDOT and completed a temporary repair within hours. Within 24 hours, a full operation was put in place to close the highway and repair all of the remaining inlets as a preventative measure.

Cement stabilized sand was needed to fill some inlets within the road areas. A third-party supplier was responsible to deliver it but their plant went down due to lightning and could not be repaired until Monday morning which would have severely impacted traffic. Nick Scott (Project Superintendent) took prompt action to maintain the repair schedule and avoid severe impacts to the traffic. Teddy Waltman (Plant Foreman) was contacted, dropped his personal activities and reported to the site immediately. The team reassembled to operate from the onsite concrete plant and completed the work hours ahead of schedule.

**TxDOT's Assistant Area Engineer publicly recognized Webber's proactiveness, reaction and ability to address any incidents as they arise.**

“Anything can be achieved with team work, no matter how big or small the job is. To me, Webber is more of a family than a team. Family helps each other out and we could achieve any obstacle that is in our path with the help of family. I was just doing my job helping family out.”

Teddy Waltman,  
Plant Foreman



(Left to Right) Juan Aguayo (Traffic Control Foreman), James Kennedy (Senior Project Manager), Nick Scott (General Superintendent), Teddy Waltman (Plant Foreman), Travis Braswell (Earthworks Foreman) and Jose García (Superintendent)

“Preserving the safety of the travelling public is paramount for Webber. Not only did our Superintendent, Nick Scott detect an existing condition ahead of becoming a hazard, but also remedial actions were implemented immediately. By leveraging Webber's multidisciplinary resources, the crews could fabricate the materials needed themselves and complete the work safely and ahead of schedule. The ability to respond, adapt and collaborate is critical for Webber's continued success.”

Fernando Pizarro,  
Area Manager

“The Safety of our people and the traveling public come before anything else. On our project, we have good client relationships and have some of the best employees I have ever worked with, and that was the key to the success of this operation.”

James Kennedy  
Senior Project Manager

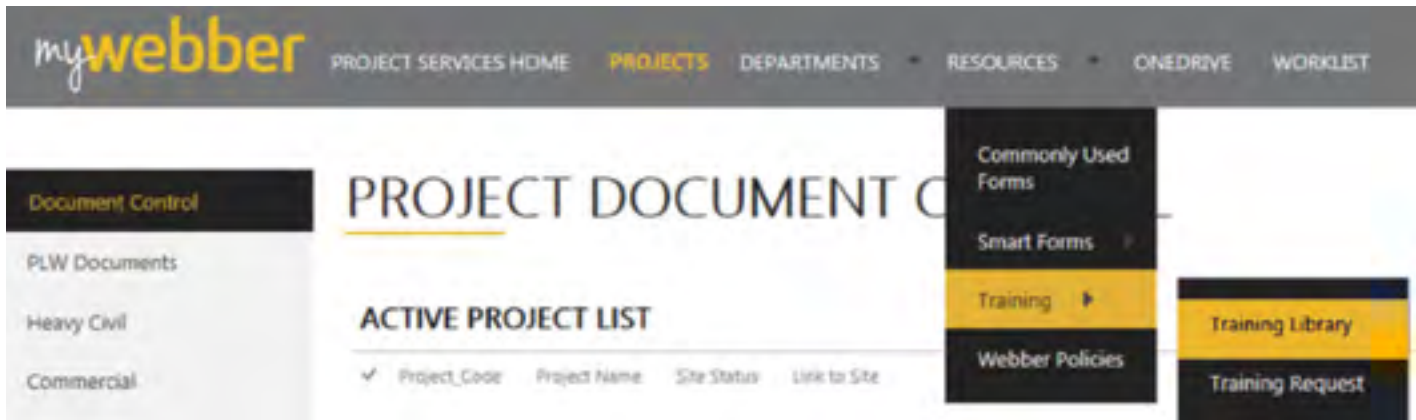


## OPERATIONS SPOTLIGHT

# IMPROVE YOUR EXPERIENCE ON WITH NEW TRAINING SERVICES



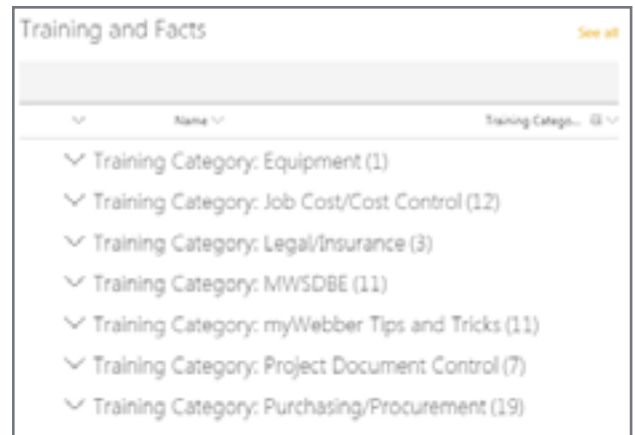
myWebber now has additional training modules available to assist users and make sharepoint a much simpler tool to help increase project productivity and business tracking. To access the training site, go to the “Project Services” homepage, click the “Resources” drop-down and select “Training.” Within the training page, there are resources to help enhance the SharePoint experience use.



## TRAINING LIBRARY

The training library hosts seven categories, with 64 documents, which provide detailed instructions on how to complete a task.

**Training Category:** myWebber Tips and Tricks is especially helpful if you are new to the SharePoint platform. Here you can find documents that show you how to connect to outlook, set alerts and much more.



## VIDEO TRAINING

<https://ferrovial365.sharepoint.com/sites/myWebber/ProjectServices/SitePages/myWebber-Training.aspx>

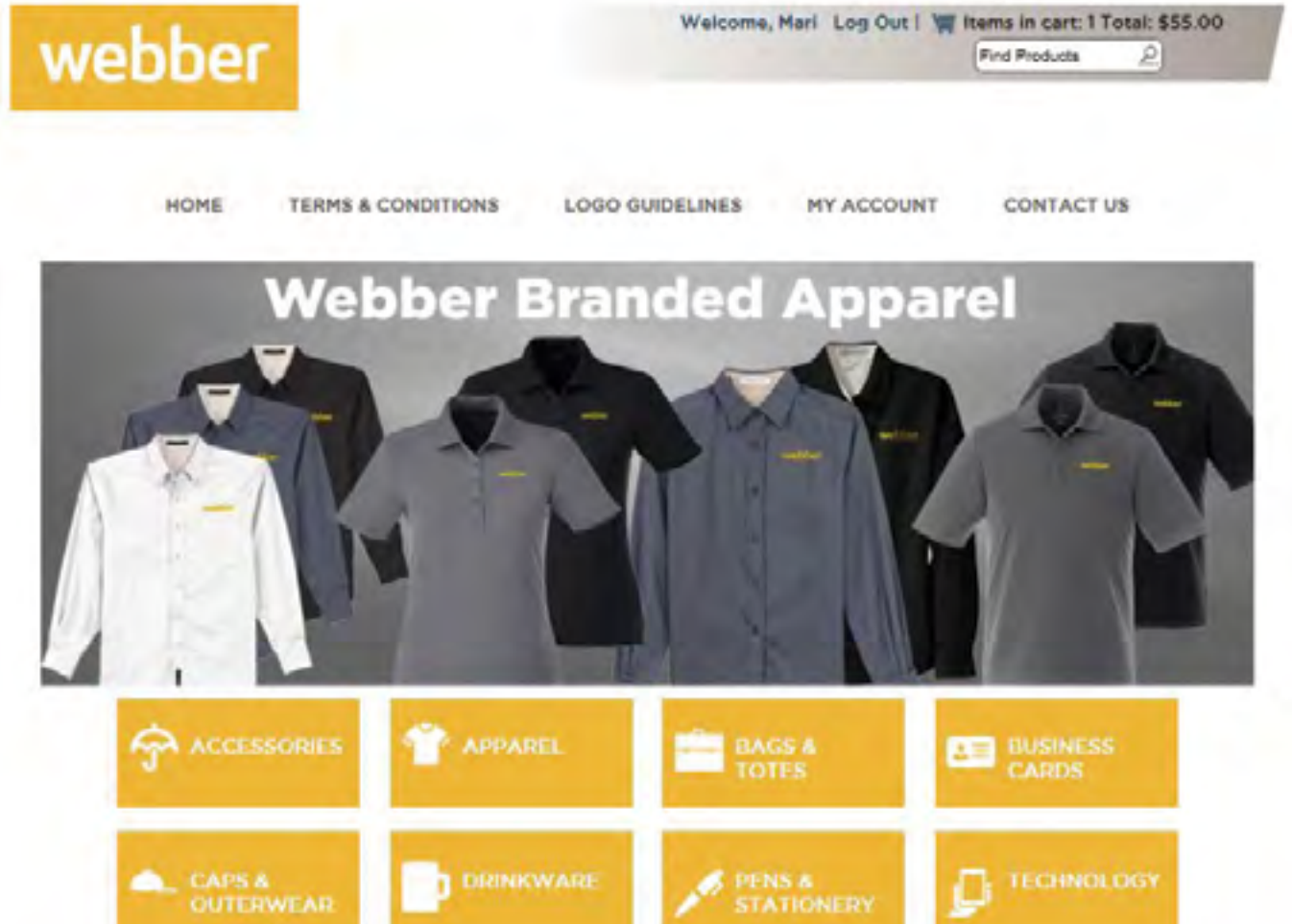
There are also videos that walk employees step-by-step through how to complete a process or task. The videos currently available are:

- New Project Request Process
- Navigation in Project Services
- Accessing Project Services
- OneDrive and Sync Functionality
- Navigation in Project Services

**Want more training? Scan the QR code to submit a training request to the myWebber team.**



# WEBBER STORE NOW OPEN!



The Webber Store is now open for business. Employees may purchase hats, polos, cups and other items by visiting [webber.epromo.com](http://webber.epromo.com). Employees must register on the site before checking out by entering their name, company name and creating a personal password for the site.

Personal purchases may be made on the site via credit card or authorized, business-related purchases can use direct charge to bill internally to the correct department or project code. All business-related purchases will require department head or project manager approval, which is built into the billing system on the website. Department heads or project managers will receive an email requesting the reply with approval on an order with the subject line: "Webber - Order Approval - Please Reply with Your Approval."

In addition to Webber merchandise, business card ordering is now a self-service item on the Webber Store. Employees simply need to select the business line logo, enter their contact information into the fields provided and provide an email address for their supervisor to approve the business card content before printing. Business cards will take about five business days to print and ship.

**Coming Soon:** Project site items, such as safety banners, plywood project signage, site fencing and table cloths will be available for purchase via the Webber Store with direct shipping to the project site or regional office.

## A FEW RULES TO REMEMBER

All company paid purchases must be approved by your department head or project manager.

Purchases of Webber, Webber Commercial, Webber Heavy Civil, PLW Waterworks, SCC Materials or WBS merchandise (anything with a Webber trademarked logo) must be ordered from the Webber Store or you may be denied reimbursement or vendor payment.

If you want an item that is not on the store, please contact [myWebber@wwebber.com](mailto:myWebber@wwebber.com) for assistance or use the Contact Us form. This can include large purchases of items or business line logo items that are not currently available (example: tumblers with the SCC Materials logo or USBs with the PLW Waterworks logo).

Example: Department Manager Approval Email

Subject: Ashley Vergauskie <Ashley.vergauskie@carp-mc.com>  
Webber - Order Approval - Please Reply with Your Approval

**Shipping Information**

Shipping From: Business  
Webber  
Haley Kent  
1729 Hughes Landing #1200  
The Woodlands, tx 77380  
United States  
[Ashley.vergauskie@carp-mc.com](mailto:Ashley.vergauskie@carp-mc.com)  
Phone: 281.907.8800  
Free Delivery to The Woodlands Office

**Billing Information**

Webber  
Haley Kent  
1729 Hughes Landing #1200  
The Woodlands, tx 77380  
United States

**Payment Method:** Direct Charge

**Other Information:**

Company Code: Webber  
Requested By: Haley Kent  
Department Code: **00000000**  
Department #: **00000000**  
Department: Marketing & Communications  
Department Name: Marketing & Comm  
Approver: Man Pillar  
Approver Email: [manpillar@webber.com](mailto:manpillar@webber.com)

**Order Notes:**

This is a test but I want to see how the approver email goes through to the approver.

SKU	Product Description	Quantity	Price	Total
R23017	Open Release Backpack	1 (standard)	\$10.00	\$10.00
Subtotal:			\$10.00	
Sales Tax:			N/A	
Total:			\$10.00	

Shipping/Free Delivery to The Woodlands Office: N/A

Example: Check Out Window

webber

Welcome, Man! Log Out | 1 Item in cart: 1 Total: \$55.00  
Free Products

HOME TERMS & CONDITIONS LOGO GUIDELINES MY ACCOUNT CONTACT US

**CATEGORIES**

- Accessories
- Apparel
- Bags & Totes
- Business Cards
- Caps & Outerwear
- Drinkware
- Pens & Stationery
- Technology

**Checkout**

Checkout Steps: [Shopping Cart](#) > [Shipping Info](#) > [Billing Info](#) > [Save Shipping Cart & Finish Later](#)

Step 2 of 3: Billing Info

**Billing Method**

Please select a payment type from the drop down below:

**Direct Charge**

**Billing Address**

Is your billing address the same as your shipping address? ☐ Yes ☒ No

Company Name:

Contact Name:

Billing Address:

City, State/Province, Postal Code:

Country:

\*\*\*You must first select a Billing Method and update your Billing address before continuing onto the next section.

**You must complete the Product or Department related fields for this order. Approval will be required from the authorized Approver for the order to be processed.**

Company Code:

Requested By:

Project Code:

Project Cost Code:

Project Manager:

Project Manager's Email:

Department Code:

Department #:

Department:

Department Name:

Approver:

Approver Email:

© Copyright 2018 Webber, LLC, USA. All Rights Reserved.



Visit the Webber Store at  
[webber.epromo.com](http://webber.epromo.com)



## FOCUS ON ENVIRONMENT

# THREE PROJECTS POSE THREE VERY DIFFERENT CHALLENGES FOR OUR PROJECT TEAMS

At Webber, we look at our projects as vital infrastructure for the community and their economies. But our projects also have a very real impact on the environment beyond waste disposal or protecting natural resources. With Webber's commitment to the local communities we serve, it is important that we recognize how the projects we manage impact the environment and work towards reducing their impact for future generations.

## US-77 AND PROTECTED SPECIES



With the nature of the construction industry, Webber has the challenging task to deliver large-scale projects, on time and within budget, while maintaining the well-being of the surrounding ecosystems. The US 77 project, located in Purcell, Oklahoma, has come across several endangered species and has had to take special precautions to avoid harm.

Spawning season for the Arkansas River Shiner Minnows is May 1st through August 31st. During this time, no work can take place that requires the project team to be on the ground in the critical habitat zone, which is the area that encompasses the river and roughly 150 feet on both sides. The team may continue work on the bridge deck, but all the substructure work must be complete.

The no work-zone is non-negotiable during spawning season and the US 77 team must restore the area, use construction fencing to seal the area off and remove all equipment during this four-month protected window.

“By working closely with the ODOT Biologist team to keep them informed of our intentions and our schedule, we were able to resolve the issues necessary to complete the substructure of the bridge and set our beams before the May 1st cut off,” said Project Manager, Levi Pohlmeier. “We all strive to be good stewards and to leave a project in a much better place than when we arrived so that this bridge and the natural areas it spans, can be enjoyed for generations to come.”

The US 77 project team has also encountered many species of protected migratory birds during the demolition phase of the bridge. These birds have historically used the existing bridge to establish their nests during mating season, however the aging bridge and construction activity create a hazard to them as well as the traveling public. The team has been vigilant in removing early signs of nest building to avoid construction delays while respecting the natural habitat areas around the bridge where the birds can nest until the new bridge is completed.

## KARST ENCOUNTERED ON THE US 281 PROJECT



Karst is identified as an area of land made up of limestone and features landscapes such as caves, underground streams and sinkholes on the surface. The US 281 project is in a highly sensitive karst area since it is within the boundaries of the Edwards Aquifer Recharge Zone, which is one of the most prolific aquifers in the world. Limestone is a soft rock, and therefore the aquifer causes the rock to erode away-- creating karst landscapes. What is so unique about karst is that it often houses endangered species.

The US 281 project came across karst while excavating for structural foundations, and has since taken proper protocol to protect the karst landscape. This area often houses three karst invertebrate species: the Madia's Cave Meshweaver, Rhadine Infernalls and Rhadine Exilis Ground Beetles. Though there has been no discovery of the endangered species in the karst, the US 281 team immediately notified TxDOT and performed fourteen surveys every 48 hours. The goal was to close the penetrated landscape to prevent the risk of dying out karst invertebrate habitat. A closure plan, essentially a proposal on how the team will "plug" the hole, is then submitted to the Texas Commission on Environmental Quality (TCEQ) for approval.

To date, all but one of the closure plans have consisted of filling the void with bull rock, covering the void with filter fabric, then capping it with concrete. The one closure plan that the US 281 team has not yet submitted, found a massive void. TxDOT is currently in the process of re-designing the foundation before submitting the closure plan to the TCEQ.

From the karst discovery to the closure, the process has taken about two months.

## ASBESTOS MITIGATION AT AUSTIN HIGH SCHOOL



The Houston Independent School District's Austin High School is an 82-year-old structure built in a time when asbestos was considered to be a crucial construction material given its heat, electricity and chemical resistant properties. However, with time and exposure, health experts have found increasing evidence that exposure to asbestos can have lasting effects.

The only way to confirm the presence of asbestos in a material is to have it tested at a laboratory. Though the project team is still conducting tests, it was confirmed that this hazardous material is present at Austin High School and abatement to remove the material is currently underway.

Webber Commercial has the expertise necessary to manage the abatement process from start to finish. All team members are required to complete an Asbestos Awareness class. In addition to the training, personal protective equipment (PPE) and respirators, crews may not enter the contaminated area until deemed safe by abatement professionals and project leadership.

There are short-term options available, such as capsulizing the hazardous areas by building walls. However, this is risky because even a nail to hold a picture frame can cause exposure. By dealing with the situation head-on, Webber Commercial will be eliminating potential endangerment to students, teachers, and faculty and keep future generations safe.

**In the next issue, we will explore three more projects and how their project teams are turning environmental challenges into opportunities to demonstrate Webber's commitment to our clients and the communities we serve.**



# COMPLETED PROJECTS



## US 62 LUBBOCK COUNTY

### Location:

US 62 / 82 and Upland Ave.,  
Lubbock, TX

**Completion:** April 2018

**Value:** \$43 million

**Owner:** TxDOT

### PROJECT DESCRIPTION:

Construct non-freeway two-lane/two-way highway with an at-grade intersection to freeway with two lanes plus two-lane/two-way frontage roads with an overpass at the intersection. In addition, a new spur bridge connector was constructed.

### PROJECT SUCCESSES

- Opened new frontage roads and spur bridge in eight months by combining different phases of the TCP with small adjustments.
- Finished 36-month contract project in 31 months, 26 for substantial completion.
- Doubled project gross margin.
- Combination of subcontractor and supplier for asphalt operation- Lone Star from San Antonio to lay mix and Allen Butler from Lubbock to produce.
- Great support from a community that acknowledged our efforts to complete the project ahead of schedule whilst performing high quality work.



## IH-45 RECONSTRUCTION

### Location:

Navarro County,  
Corsicana, TX

**Completion:** March 2018

**Value:** \$75.2 million

**Owner:** TxDOT

### PROJECT DESCRIPTION:

14.2 miles of lane and shoulder widening in each direction on IH-45.

### PROJECT SUCCESSES

- A 37-month project that was primarily completed in 27 months despite two separate 25" rain events and one 10" rain event.
- Early planning allowed for a rephasing plan to be approved that cut the heart of the project from five phases to two phases.
- Innovative ideas and execution allowed for two major bridge widening substructures to be completed underwater to keep the project on schedule.





## FM 423 MAIN STREET, ROADWAY IMPROVEMENT PROJECT

- Location:** Denton County, The Colony, TX  
**Completion:** November 2017  
**Value:** \$64.5 million  
**Owner:** TxDOT  
**Architect:** Jacobs Engineering Group (roadway and structures) and Halff Associates (Utilities)



### PROJECT DESCRIPTION:

FM 423 Main Street in The Colony is a widening improvement project of about 4.2 miles, running from SH 121 north to the city of The Colony. The improvements consisted of:

- Relocating eight miles of existing water and sewer lines (a package of about \$13 million).
- Construction in different northbound and southbound phases.
- Increasing from two existing lanes to 3-4 lanes.
- Performed about 230,000 square yards of paving and median works.
- Rebuild seven major intersections, two bridges, MSE walls and 6,000 feet of noise walls with artistic touches.

### PROJECT SUCCESSES

- Working in a very traffic-congested area, sharing workspace with the public and residents and coordinating construction phases with TxDOT and The Colony to keep a safer construction area.
- Minimize the number of phases and noise impact to the residential areas with the goal to save time, cost and resources.
- In early 2016, the job was immersed in delays and conflicts causing it to potentially fall into liquidated damages. It was behind schedule and showed final completion for February 2018.
- The road opened to full capacity in July 2017, four months ahead of schedule achieving an early completion bonus from TxDOT. This completion was achieved by the constant weekly planning, team commitment, improved relationship with TxDOT and work with all the groups within Webber.

## IH-20 & SH 351 BRIDGE REPLACEMENT

- Location:** Taylor County, Abilene, TX  
**Completion:** March 2018  
**Value:** \$14.63 million  
**Owner:** TxDOT

### PROJECT DESCRIPTION:

The project was located in Northeast Abilene, Texas. Project centered on the rehabilitation of 1.92 miles of main lanes on IH-20 east bound and west bound, 0.18 miles on SH 351 and demolishing exiting overpass bridges and constructing two, four-span bridges that are 265 LF long.

### PROJECT SUCCESSES

- Webber established strong relationships with a few local contractors, which helped with the overall success. The project team also developed a strong and productive relationship with TxDOT and the C&I firm Aguirre & Fields.
- The contractual time for the project was a total of 445 working days with completion date set for September 20, 2018. The project finished seven months earlier than projected. In addition to the early substantial completion, the project achieved all three project milestones ahead of schedule and in turn, generated early completion bonuses for each completed milestone.



# MEET THE 2018 INTERNS

26 interns have joined Webber's 12-Week Operations/Field Internship Summer Program this year. This highly structured program focuses on helping each student make the most of their internship this summer while developing future leaders for the company. Each intern is assigned to a business unit and focuses on 4-6 program elements. All interns participating in this rotational program will present to the leadership team at the end of their internship.

## Heavy Civil and PLW Program Elements:

- Safety - Safety Orientation, CPR/First Aid and OSHA Certification, Jobsite Safety, Safety Compliance
- Survey - Functions of Survey, Survey Equipment
- Project Supervision - Look aheads, work plans, field management
- Field Engineering & Estimating - Quantities/ Take-offs, Budgeting, RFIs and Submittals

## Commercial Program Elements:

- Safety - Safety Orientation, CPR/First Aid and OSHA Certification, Jobsite Safety, Safety Compliance
- Project Supervision - Look aheads, work plans, field management
- Field Engineering & Estimating - Quantities/ Take-offs, Budgeting, RFIs and Submittals

## SCC Program Elements:

- Safety - Safety Orientation, CPR/First Aid and OSHA Certification, Equipment/Trucking Safety, Pinch Points, Dust/Noise Compliance, OSHA v. MSHA
- Crushed Concrete - Crusher work flow, yard locations, product types
- Sand Plant - material types, sand plant operations
- Asphalt - plant operations, lab testing and mix design, product types
- Demolition - estimating, project execution, measuring, utility location
- Environmental - permit types, site inspections, water quality testing, record keeping



**Christian GARCIA**

**SCHOOL:** Texas State University

**MAJOR:** Construction Science and Management

**CLASSIFICATION:** Graduated May 2018

**FUN FACT:**

"I am excited to apply the knowledge gained in the classroom and mesh it with the real-life experience I will gain through my internship."

**Juliana ANDERSON**

**SCHOOL:** Colorado School of Mines

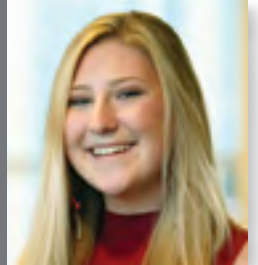
**MAJOR:** Environmental Engineering

**MINOR:** Economics and Energy

**CLASSIFICATION:** Junior

**FUN FACT:**

"I'm originally from Carson City, Nevada and currently live in Golden, Colorado so I'm sure it's no surprise that I love hiking, biking, skiing and pretty much anything else outdoors. Although, the humidity in Houston will definitely be a shock!"



**Mackenzie DILLARD**

**SCHOOL:** Texas A&M University

**MAJOR:** University Studies- Architecture

**MINOR:** Business / Architectural Fabrication / Product Design

**CLASSIFICATION:** Junior

**FUN FACT:**

"I am head of public relations for the National Association of Home Builders chapter at Texas A&M, as well as a team member for the organization Build. I grew up in a small town north of Houston called Tomball. I love to play sports in my free time and spend quality time with my family and friends."

**Michael LEMOINE (LEVI)**

**SCHOOL:** Louisiana State University

**MAJOR:** Civil Engineering

**CLASSIFICATION:** Senior

**FUN FACT:**

"Hi, my name is Levi Lemoine and I couldn't be more excited for the opportunity to intern with Webber this summer and to learn and gain new experience in my career."





### Kevin ROARK

**SCHOOL:** Texas A&M University

**MAJOR:** Mechanical Engineering

**MINOR:** Math and Spanish

**CLASSIFICATION:** Senior

**FUN FACT:**

"I am part of A&M's Formula SAE team and President of the TAMU Self Defense Organization as a green belt in Krav Maga. I look forward to working hard and learning over the summer with Webber."



### Renee RAINES

**SCHOOL:** The University of Texas at Austin

**MAJOR:** Civil Engineering concentrating in Water Resources and Hydraulics

**CLASSIFICATION:** Junior

**FUN FACT:**

"Outside of classes, I enjoy volunteering with Habitat for Humanity and advocating for anti-animal cruelty causes."

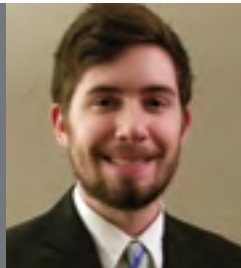
### Andrew PEARCE

**SCHOOL:** Colorado School of Mines

**CLASSIFICATION:** Senior

**FUN FACT:**

"I have an extreme love for the sport of hockey and the Colorado Avalanche. I have played the sport for many years. I also love designing in Solidworks and simulating different situations (i.e. static studies, motion studies, flow simulations, etc.)."



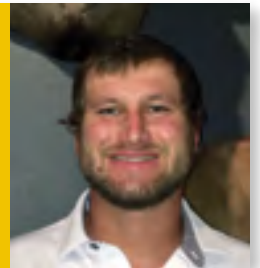
### Michael BECK

**SCHOOL:** Sam Houston State University

**CLASSIFICATION:** Senior

**FUN FACT:**

"I grew up in Arlington, Texas and I'm really excited for this opportunity that Webber has presented to me as an intern for the heavy civil department this summer."



### Adam TRUJILLO

**SCHOOL:** Colorado School of Mines

**MAJOR:** Civil Engineering

**CLASSIFICATION:** Senior

**FUN FACT:**

"As a Colorado native, I enjoy spending my time outside where you can catch me hiking, rock climbing, mountain biking, and just about any activity that gets you moving."



### Tchael JEUNE (TJ)

**SCHOOL:** University of Florida

**MAJOR:** Civil Engineering

**CLASSIFICATION:** Junior

**FUN FACT:**

"I am originally from Port St. Lucie, Florida and all my life I have had a passion for roads, bridges and general infrastructure."

### Adam AAB

**SCHOOL:** University of Oklahoma

**MAJOR:** Civil and Environmental Engineering

**FUN FACT:**

"I don't have a definable plan on where I want to go after I graduate, but I am interested in getting involved in roadway design."



### Drew LEIGHTON

**SCHOOL:** Texas A&M University

**CLASSIFICATION:** Junior

**FUN FACT:**

"I am very active and enjoy playing a variety of sports."



### Nick BARRIO

**SCHOOL:** Texas A&M University

**MAJOR:** Civil Engineering

**CLASSIFICATION:** Sophomore

**FUN FACT:**

"I enjoy all sports, helping others, and playing Jeopardy!"



# MEET THE 2018 INTERNS, CONTINUED



## Tyra PATTERSON

**SCHOOL:** Texas A&M University

**MAJOR:** Civil Engineering

**MINOR:** Project Management

**CLASSIFICATION:** Sophomore

**FUN FACT:**

"I love good southern food, reading, dancing, spending time with my family, and watching HGTV."



## Eric MOORE

**SCHOOL:** Texas Tech University

**MAJOR:** Mechanical Engineering

**CLASSIFICATION:** Junior

**FUN FACT:**

"I'm a proud dog owner of a nine month collie who is the sunshine of my life and in my free time I like to practice and compose music and play Fortnite."

## Joe DURAN

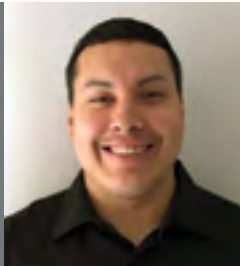
**SCHOOL:** University of Houston

**MAJOR:** Civil Engineering

**CLASSIFICATION:** Senior

**FUN FACT:**

"I did scaffolding work for six years, and I enjoy learning and working hands on."



## Grant HARALSON

**SCHOOL:** University of Texas at Austin

**MAJOR:** Civil Engineering

**CLASSIFICATION:** Junior

**FUN FACT:**

"I look forward to interning this summer, learning about Webber, and putting my Civil Engineering to practical use. I am a native Houstonian and stay active playing golf, biking, and going to the gym. I also enjoy fishing and drawing to relax and unwind."



## Axel RODRIGUEZ MINTZIAS

**SCHOOL:** Texas A&M University

**MAJOR:** Civil Engineering

**CLASSIFICATION:** Senior

**FUN FACT:**

"I was born and raised in Spain for about 14 years before me and my family moved to Texas. My passion, besides Civil Engineering, is water polo. I've been playing water polo for seven years and I currently play and coach for the A&M club teams."



## Eddie SCHWARZ

**SCHOOL:** University of Oklahoma

**MAJOR:** Construction Science

**MINOR:** Business

**CLASSIFICATION:** Junior

**FUN FACT:**

"I've always enjoyed spending time with my family and friends, and sharing similar hobbies such as sports and outdoors."

## Carlton JONES

**SCHOOL:** University of Arkansas

**MAJOR:** Civil Engineering

**MINOR:** Math

**CLASSIFICATION:** Junior

**FUN FACT:**

"I was born and raised in Norman, Oklahoma. I enjoy everything about the outdoors: hiking, kayaking, camping, running, you name it, I'm up for it."



## Jacqueline MAGANA

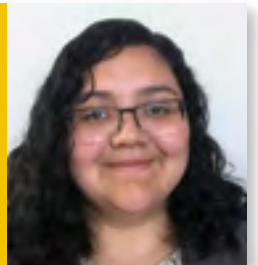
**SCHOOL:** University of Arkansas

**MAJOR:** Civil Engineering

**CLASSIFICATION:** Junior

**FUN FACT:**

"I'm from Rogers, Arkansas and I am very excited about this summer and to learn with Webber!"



**Elyssa REEVES****SCHOOL:** University of North Texas**MAJOR:** Mechanical Engineering Technology**CLASSIFICATION:** Junior**MINOR:** Music**FUN FACT:**

"I love learning how objects are put together and the mechanics behind them. I also love playing music (mainly on marimba), animals, crafting, and being outside. I am very excited to work with Webber and hope to gain valuable knowledge I can use toward my studies and future career!"

**Tyler NEWLIN****SCHOOL:** University of Texas at San Antonio**MAJOR:** Civil Engineering**CLASSIFICATION:** Senior**FUN FACT:**

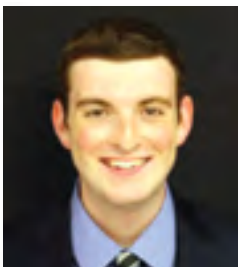
"My interests in the engineering field are structural engineering and construction. In my free time I like to play sports and do other fitness related activities."

**Payton ADAMS****SCHOOL:** Texas Tech University**MAJOR:** Civil Engineering**CLASSIFICATION:** Senior**FUN FACT:**

"My hobbies include hanging out with friends, playing video games, working out, etc. I also am a huge fan of sports, especially the OKC Thunder and Texas Rangers. I am outgoing and hardworking and always looking to meet new people. I am excited to see what this summer holds for me, and to see how much I am going to learn."

**Stephen BOHMER****SCHOOL:** Sam Houston State University**MAJOR:** Construction Science**MINOR:** Business**CLASSIFICATION:** Senior**FUN FACT:**

"I am very passionate about the development of future infrastructure, and believe that Webbers internship program is the best option for broadening my knowledge within the industry. Following graduation in the fall of 2018 I hope to find a position as a project manager. In my spare time I also enjoy exercising and offshore fishing."

**Matt GRANGER****SCHOOL:** Oklahoma State University**MAJOR:** Civil Engineering**CLASSIFICATION:** Junior**FUN FACT:**

"I am active in the American Society of Civil Engineers at OSU as well as a member of the American Concrete Institute."

**MAY / JUNE  
ANNIVERSARIES**

Thank you to our  
Teammates for their many  
great years of service.

**50 YEARS****Tim Champagne****35 YEARS****Connie Womack-Lott****25 YEARS****Gerardo Salas****20 YEARS****Hector Aguirre****Isidro Ibarra****Juan Amaro****Ruben A. Mendez****15 YEARS****Juan Lesarri Fernandez****Gustavo Raya Rodriguez****Valentin Leos****Tereso Montoya****Jose Miguel Torres****Leandro Vasquez****10 YEARS****Jose Carlos Garcia****Javier Montelongo****Mamie Niederhofer****Henry Robles****Rogelio Servin****Miguel Villegas****James Walker****5 YEARS****James Becknell****Saul Delgado Flores****Saul Magallanes****Lionel Massey****Crescencio Salazar Avila****Juan Alvarado****Severiano Alvarez De Leon****Andrea Arroyo****Aubrey Ballew****Alionso Baltazar Ortega****Josey Bell****Elmer De-Jesus Carballo****Brady Fogarty****Branden Hernandez****Jaime Lopez****Onecimo Martinez****Rachael McKinney****Jose Saldana**



# THIS MONTH IN PHOTOS



## Hollister Deck Placement

The 290 Structures Crew placing the EBML Hollister Bridge Deck associated with the EBML Completion Milestone #4!



## Webber Commercial Team - 2 Year Accident Free

Congratulations are in order for the Webber Commercial project teams for staying accident free for two years!



## Laredo Safety Lunch

The PLW Laredo project hosted a lunch to celebrate six months with no recordable accidents or first aids. Great job team!



## AGC Arkansas Award

Webber received the AGC Arkansas' Safety Excellence Award in May! Congratulations to our leaders in safety for ensuring that safe practices are a priority for the Webber culture.



## Touch a Truck Day

Bill Burden Elementary School (Liberty Hill, TX) hosted "Touch a Truck Day" where students had an opportunity to get up close to trucks they see every day around the city and speak with operators. Our PLW Waterworks team accepted the request to provide a front-end loader for the event. Superintendent Anthony Ross answered important student questions, such as "Why is construction equipment yellow?"



## OSHA Fall Protection Demonstration

During OSHA's National Safety Stand-Down for Fall Prevention, Webber's project sites had a variety of vendors come out to promote fall safety with demos on proper harness inspection and donning, working from heights around electrical lines and drop tests.



Send us your news at [myWebber@wwebber.com](mailto:myWebber@wwebber.com)

Feedback, questions or concerns for the leadership team, contact [WebberListens@wwebber.com](mailto:WebberListens@wwebber.com)